

Mazie Bryant
Associate
mbryant@bradley.com
(205) 521-8011 direct



RV2026-015
RECEIVED
May 04 2026
STATE HEALTH PLANNING AND
DEVELOPMENT AGENCY

May 4, 2026

Via Email (shpda.online@shpda.alabama.gov)

Emily Marsal
Executive Director
State Health Planning and Development Agency
100 North Union Street, Suite 870
Montgomery, AL 36104

RE: Request for Reviewability Determination – Notice of Change in Indirect Ownership
– Enhabit, Inc.

Dear Ms. Marsal:

I am writing on behalf of Enhabit, Inc. (“Enhabit”) and Kinderhook Industries, LLC (“Kinderhook”) to inform the Alabama State Health Planning & Development Agency (“SHPDA” or the “Agency”) of an upcoming transaction resulting in an indirect change of ownership of Enhabit, which is the ultimate parent entity of Enhabit subsidiaries operating in Alabama (each, a “Provider”), as attached in **Exhibit A**. The purpose of this letter is to request your determination, pursuant to Rule 410-1-7-.02 of the Alabama Administrative Code that Enhabit does not require a Certificate of Need (“CON”) from SHPDA to pursue the transaction described in this letter. In order to assist with this determination, we offer the following information.

Enhabit is currently a publicly traded corporation (NYSE: EHAB) operating more than 350 home health and hospice locations across 34 states through its affiliate entities. On February 22, 2026, Enhabit entered into an Agreement and Plan of Merger (the “Merger Agreement”) with two Kinderhook subsidiaries. Pursuant to the Merger Agreement, at closing, a subsidiary of Kinderhook will be merged with and into Enhabit, with Enhabit surviving the merger as a wholly owned subsidiary of a Kinderhook subsidiary (the “Transaction”). The Transaction will close following the receipt of Enhabit stockholder approval, receipt of regulatory approvals, and satisfaction of other customary closing conditions, which is currently anticipated to occur as soon as the second quarter of 2026.

As part of the proposed Transaction, a subsidiary of Kinderhook will acquire 100% of Enhabit. Attached as **Exhibit B** are pre- and post-closing ownership charts reflecting the changes in indirect, upstream ownership of the Providers. Because of the indirect nature of the Transaction, please note

that the EIN, legal name, d/b/a name, NPI, and Medicare provider number of each Provider are not anticipated to change as a result of the Transaction.

The Transaction will not result in the implementation of a new institutional health service or change the services that Enhabit's subsidiary agencies provide across the state. Further, the Transaction does not involve any construction and will not result in either an increase in the number of licensed inpatient beds or a reclassification of beds.

For these reasons, the Transaction is not subject to CON review. *See* Ala. Code 1975, § 22-21-263; Ala. Admin. Code r. 410-1-2-.07. We therefore respectfully request your determination that Enhabit is not required to obtain a CON to undergo the Transaction.

We appreciate your consideration of this request, and any questions should be directed to Mazie Bryant at mbryant@bradley.com or 205-521-8011, or Lindsay Borgeson at lindsay.borgeson@kirkland.com or 212-390-6967. Payment for the applicable fee will be submitted via electronic payment portal.

Sincerely,

A handwritten signature in black ink that reads "Mazie Bryant". The signature is written in a cursive, flowing style.

Mazie Bryant

Affirmation of Requesting Party:

The undersigned, being first duly sworn, hereby makes oath or affirms that she, as Executive Vice President of Home Health Operations of Enhabit, Inc., has knowledge of the facts in the attached Request for Reviewability Determination, and to the best of her information, knowledge and belief, such facts are true and correct.



Julie Jolley
Executive Vice President of Home Health Operations
Enhabit, Inc.

(SEAL)



SUBSCRIBED AND SWORN to before me this 30th day of April, 2026.



Notary Public

My commission expires: 04/04/2027

Exhibit A

List of Enhabit Providers

Provider Type	Legal Name	Facility Name	Address	License No.
Hospice Agency (Parent)	Camellia Home Health of Alabama, LLC	Enhabit Hospice Huntsville	9668 Madison Boulevard, Suite 335 Madison, AL 35758-9147	Facility ID: E5205 Cert: 29289
Hospice Agency (Parent)	Camellia Hospice of Northeast Alabama, LLC	Enhabit Hospice Rainbow City	101 Church Street, Suite A Rainbow City, AL 35906-6242	Facility ID: E2807 Cert: 29328
Hospice Agency (Parent)	Camellia Hospice of South Alabama, LLC	Enhabit Hospice Prattville	4782 Woodmere Boulevard, Suite C Montgomery, AL 36106-3065	Facility ID: E4605 Cert: 29297
Hospice Agency (Branch)	Camellia Hospice of South Alabama, LLC	Enhabit Hospice Dothan	3379 W Main Street, Suite 2 Dothan, AL 36305-1018	Facility ID: E3507 Cert: 29286
Hospice Agency (Parent)	EH Health Hospice of Alabama, LLC	Enhabit Hospice Birmingham	1 Chase Corporate Drive, Suite 210B Hoover, AL 35244-1000	Facility ID: E3710 Cert: 29281
Hospice Agency (Branch)	EH Health Hospice of Alabama, LLC	Enhabit Hospice Opelika	2312 Center Hills Drive, Suites B & C Opelika, AL 36801-7279	Facility ID: E4103 Cert: 29277
Hospice Agency (Branch)	EH Health Hospice of Alabama, LLC	Enhabit Hospice Anniston	2109 Highway 78 East Anniston, AL 36207-8327	Facility ID: E0803 Cert: 29278
Hospice Agency (Branch)	EH Health Hospice of Alabama, LLC	Enhabit Hospice Albertville	9044 Highway 431 Albertville, AL 35950-0158	Facility ID: E4807 Cert: 29279
Hospice Agency (Branch)	EH Health Hospice of Alabama, LLC	Enhabit Hospice Alexander City	33 Aliant Parkway Alexander City, AL 35010-3446	Facility ID: E6206 Cert: 29280
Hospice Agency (Branch)	EH Health Hospice of Alabama, LLC	Enhabit Hospice Clanton	2002 Lay Dam Road Clanton, AL 35045-8344	Facility ID: E1104 Cert: 29282
Hospice Agency (Branch)	EH Health Hospice of Alabama, LLC	Enhabit Hospice Cullman	1311 2nd Avenue SW, Suite B2 Cullman, AL 35055-5368	Facility ID: E2208 Cert: 29283
Hospice Agency (Branch)	EH Health Hospice of Alabama, LLC	Enhabit Hospice Decatur	115 Johnston Street SE, Suite 301B Decatur, AL 35601-5505	Facility ID: E5202 Cert: 29284
Hospice Agency (Branch)	EH Health Hospice of Alabama, LLC	Enhabit Hospice Enterprise	108 Easy Street, Suite 100A Enterprise, AL 36330	Facility ID: E3504 Cert: 29285
Hospice Agency (Branch)	EH Health Hospice of Alabama, LLC	Enhabit Hospice Gadsden	101 Church Street, Suite B Rainbow City, AL 35906-6242	Facility ID: E2803 Cert: 29327

Hospice Agency (Branch)	EH Health Hospice of Alabama, LLC	Enhabit Hospice Greenville	321 Greenville Bypass, Suite 1 Greenville, AL 36037-3757	Facility ID: E0704 Cert: 29287
Hospice Agency (Branch)	EH Health Hospice of Alabama, LLC	Enhabit Hospice Hamilton	311 State Highway 17, Suite 3 Hamilton, AL 35570-8803	Facility ID: E4705 Cert: 29288
Hospice Agency (Branch)	EH Health Hospice of Alabama, LLC	Enhabit Hospice Madison County	9668 Madison Boulevard, Suite 335A Madison, AL 35758-9125	Facility ID: E4512 Cert: 29292
Hospice Agency (Branch)	EH Health Hospice of Alabama, LLC	Enhabit Hospice Jasper	3699 Industrial Parkway Jasper, AL 35501-9256	Facility ID: E6406 Cert: 29291
Hospice Agency (Branch)	EH Health Hospice of Alabama, LLC	Enhabit Hospice Mobile	316 Bel Air Boulevard, Suite 100B Mobile, AL 36606-3507	Facility ID: E4918 Cert: 29290
Hospice Agency (Branch)	EH Health Hospice of Alabama, LLC	Enhabit Hospice Muscle Shoals	1640 S Wilson Dam Road, Suite B Muscle Shoals, AL 35661-2768	Facility ID: E1703 Cert: 29293
Hospice Agency (Branch)	EH Health Hospice of Alabama, LLC	Enhabit Hospice Montgomery	4782 Woodmere Boulevard, Suite B Montgomery, AL 36106-3065	Facility ID: E5106 Cert: 29294
Hospice Agency (Branch)	EH Health Hospice of Alabama, LLC	Enhabit Hospice Oneonta	1409A 2nd Avenue E, Suite A Oneonta, AL 35121-2607	Facility ID: E0502 Cert: 29295
Hospice Agency (Branch)	EH Health Hospice of Alabama, LLC	Enhabit Hospice Pell City	74 Plaza Drive, Suite 1C Pell City, AL 35125-9371	Facility ID: E5802 Cert: 29296
Hospice Agency (Branch)	EH Health Hospice of Alabama, LLC	Enhabit Hospice Rainsville	504 McCurdy Avenue S, Suite 6 Rainsville, AL 35986-5254	Facility ID: E2501 Cert: 29298
Hospice Agency (Branch)	EH Health Hospice of Alabama, LLC	Enhabit Hospice Scottsboro	23820 John T Reid Parkway Scottsboro, AL 35768-2841	Facility ID: E3605 Cert: 29299
Hospice Agency (Branch)	EH Health Hospice of Alabama, LLC	Enhabit Hospice Troy	751 Elba Highway, Suite B Troy, AL 36079-5051	Facility ID: E5504 Cert: 29300
Hospice Agency (Branch)	EH Health Hospice of Alabama, LLC	Enhabit Hospice Northport	100 Towncenter Boulevard, Suite 200A Tuscaloosa, AL 35406-1834	Facility ID: E6308 Cert: 29301
Home Health Agency (Parent)	CareSouth HHA Holdings of Dothan, LLC	Enhabit Home Health	3379 W Main Street, Suite 3 Dothan, AL 36305-1018	N/A
Home Health Agency (Branch)	CareSouth HHA Holdings of Dothan, LLC	Enhabit Home Health	108 Easy Street, Suite 100 Enterprise, AL 36330	N/A

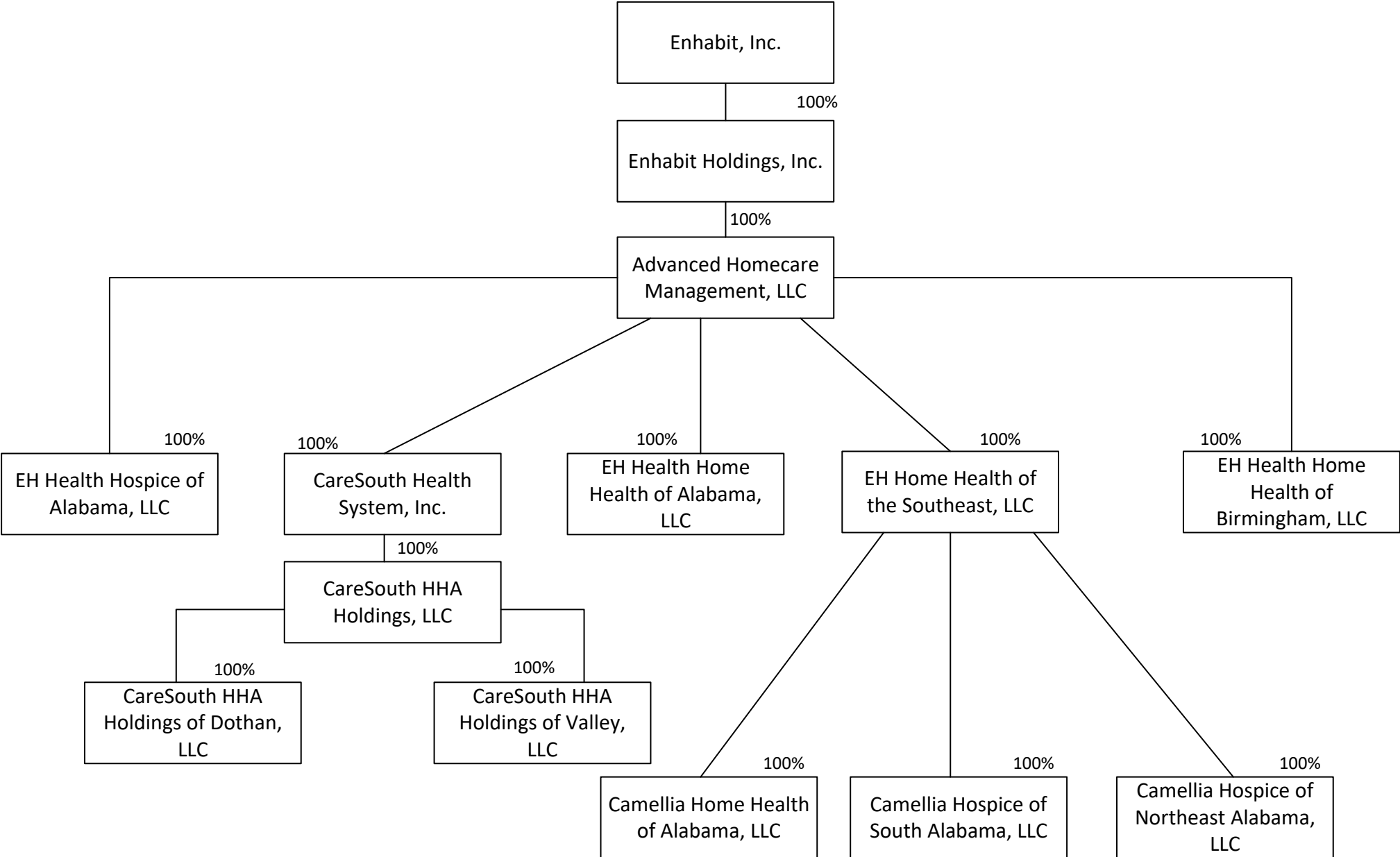
Home Health Agency (Branch)	CareSouth HHA Holdings of Dothan, LLC	Enhabit Home Health	1560 South Eufaula Avenue, Suite 6 Eufala, AL 36027-3291	N/A
Home Health Agency (Parent)	CareSouth HHA Holdings of Dothan, LLC	Enhabit Home Health	919 Sharit Avenue, Suite 213 Gardendale, AL 35071-5008	N/A
Home Health Agency (Parent)	CareSouth HHA Holdings of Valley, LLC	Enhabit Home Health	207 Fob James Drive Valley, Alabama 36854-5079	N/A
Home Health Agency (Parent)	CareSouth HHA Holdings of Valley, LLC	Enhabit Home Health	289 William E Hill Drive, Suite B Carrollton, AL 35447-3247	N/A
Home Health Agency (Parent)	CareSouth HHA Holdings of Valley, LLC	Enhabit Home Health	131 1st Avenue NW, Suite B Vernon, AL 35592-5635	N/A
Home Health Agency (Parent)	EH Health Home Health of Alabama, LLC	Enhabit Home Health	115 Johnston Street SE, Suite 301A Decatur, AL 35601-2357	N/A
Home Health Agency (Branch)	EH Health Home Health of Alabama, LLC	Enhabit Home Health	311 State Highway 17, Suite 3 Hamilton, AL 35570-8803	N/A
Home Health Agency (Branch)	EH Health Home Health of Alabama, LLC	Enhabit Home Health	802 Shoney Drive SW, Suite D Huntsville, AL 35801-5404	N/A
Home Health Agency (Branch)	EH Health Home Health of Alabama, LLC	Enhabit Home Health	1640 S Wilson Dam Road, Suite A Muscle Shoals, AL 35661-2768	N/A
Home Health Agency (Branch)	EH Health Home Health of Alabama, LLC	Enhabit Home Health	23820 John T Reid Parkway Scottsboro, AL 35768-2841	N/A
Home Health Agency (Parent)	EH Health Home Health of Alabama, LLC	Enhabit Home Health	316 Bel Air Boulevard, Suite 100A Mobile, AL 36606-3507	N/A
Home Health Agency (Parent)	EH Health Home Health of Alabama, LLC	Enhabit Home Health	751 Elba Highway, Suite A Troy, AL 36079-5051	N/A
Home Health Agency (Branch)	EH Health Home Health of Alabama, LLC	Enhabit Home Health	2312 Center Hill Drive, Suites B & C Opelika, AL 36801-7278	N/A
Home Health Agency (Branch)	EH Health Home Health of Alabama, LLC	Enhabit Home Health	33 Aliant Parkway Alexander City, AL 35010-3446	N/A

Home Health Agency (Branch)	EH Health Home Health of Alabama, LLC	Enhabit Home Health	3379 West Main Street, Suite 1 Dothan, AL 36305-1018	N/A
Home Health Agency (Branch)	EH Health Home Health of Alabama, LLC	Enhabit Home Health	321 Greenville Bypass, Suite 1 Greenville, AL 36037-3757	N/A
Home Health Agency (Branch)	EH Health Home Health of Alabama, LLC	Enhabit Home Health	4782 Woodmere Boulevard, Suite A Montgomery, AL 36106-3065	N/A
Home Health Agency (Parent)	EH Health Home Health of Birmingham, LLC	Enhabit Home Health	1 Chase Corporate Drive, Suite 210A Hoover, AL 35244-1000	N/A
Home Health Agency (Branch)	EH Health Home Health of Birmingham, LLC	Enhabit Home Health	2109 Hwy 78 E Anniston, AL 36207-8327	N/A
Home Health Agency (Branch)	EH Health Home Health of Birmingham, LLC	Enhabit Home Health	9044 Highway 431 N Albertville, AL 35950-0158	N/A
Home Health Agency (Branch)	EH Health Home Health of Birmingham, LLC	Enhabit Home Health	2002 Lay Dam Road Clanton, AL 35045-8344	N/A
Home Health Agency (Branch)	EH Health Home Health of Birmingham, LLC	Enhabit Home Health	1311 2nd Avenue SW, Suite B1 Cullman, AL 35055-5368	N/A
Home Health Agency (Branch)	EH Health Home Health of Birmingham, LLC	Enhabit Home Health	310 South 3rd Street, Suite D Gadsden, AL 35901-5224	N/A
Home Health Agency (Branch)	EH Health Home Health of Birmingham, LLC	Enhabit Home Health	3699 Industrial Parkway Jasper, AL 35501-9256	N/A
Home Health Agency (Branch)	EH Health Home Health of Birmingham, LLC	Enhabit Home Health	1409A 2nd Avenue E, Suite A Oneonta, AL 35121-2607	N/A
Home Health Agency (Branch)	EH Health Home Health of Birmingham, LLC	Enhabit Home Health	74 Plaza Drive, Suite 1C Pell City, AL 35125-9371	N/A
Home Health Agency (Branch)	EH Health Home Health of Birmingham, LLC	Enhabit Home Health	504 McCurdy Avenue S, Suite 6 Rainsville, AL 35986-5254	N/A
Home Health Agency (Branch)	EH Health Home Health of Birmingham, LLC	Enhabit Home Health	100 Towncenter Boulevard, Suite 200 Tuscaloosa, AL 35406-1834	N/A

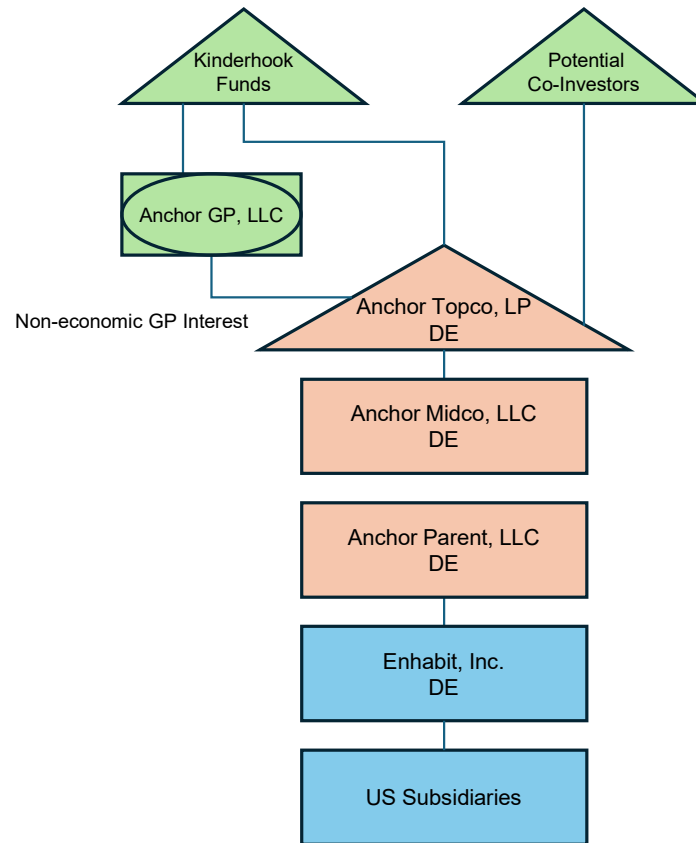
Exhibit B

Pre- and Post-Closing Organizational Charts

Pre-Transaction Ownership

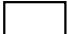





Post-Transaction Ownership



US income tax legend

All entities are US and 100% owned, unless indicated otherwise.

-  Corporation
-  Disregarded entity
-  Partnership
-  Individual

* The corporate structure below Enhabit, Inc. will remain unchanged before and after the Transaction..